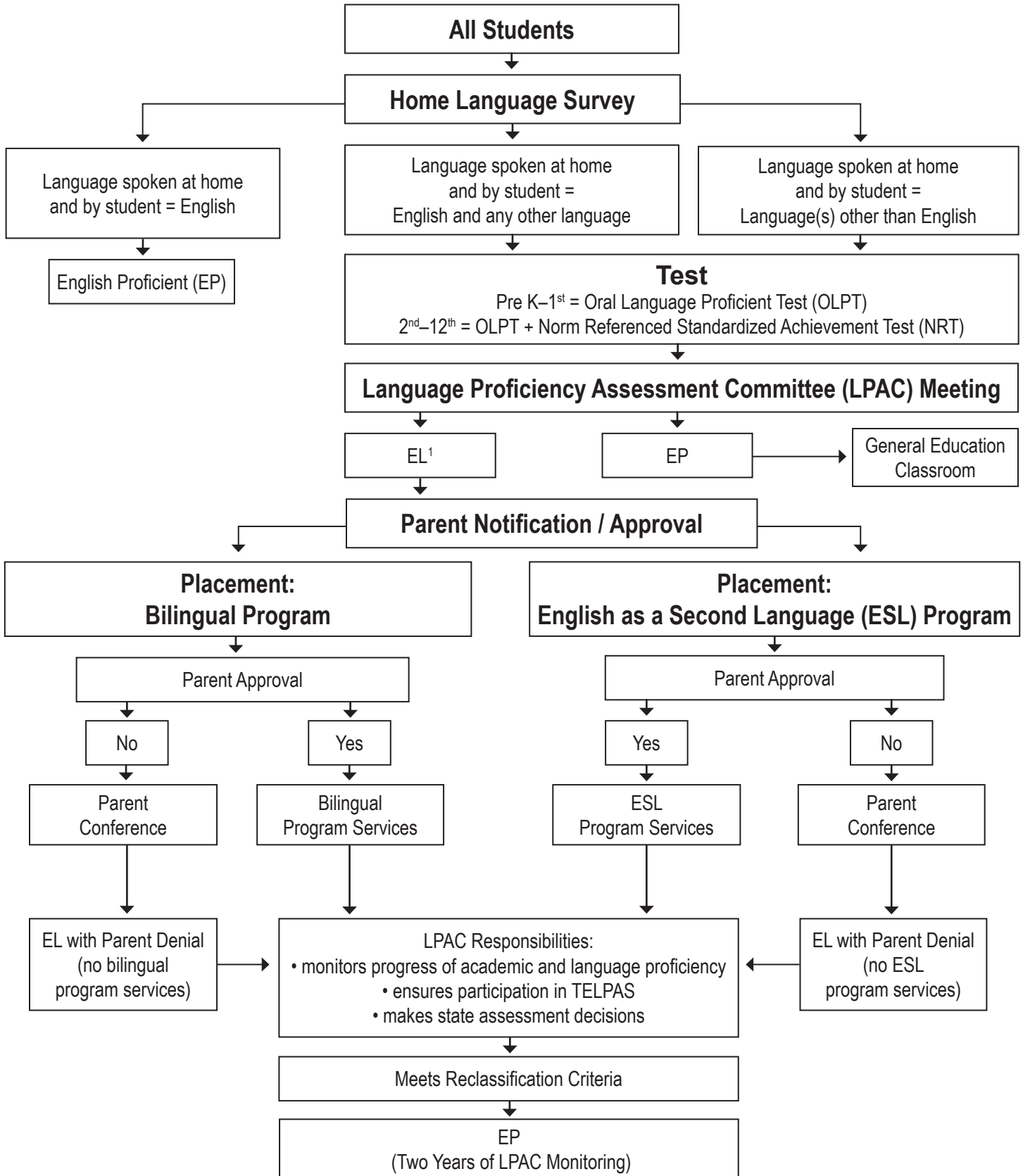


English Learner (EL) Identification/Reclassification Flowchart



¹Criteria for EL identification:

Pre-K – 1st OLPT below English proficient level = EL
 2nd – 12th OLPT below English proficient level and NRT at grade level for Reading and/or English language arts below 40th percentile = EL

The terms Limited English Proficient (LEP) and English learner (EL) are used interchangeably. The term LEP is still used for data collection in the Public Education Information Management Systems (PEIMS).